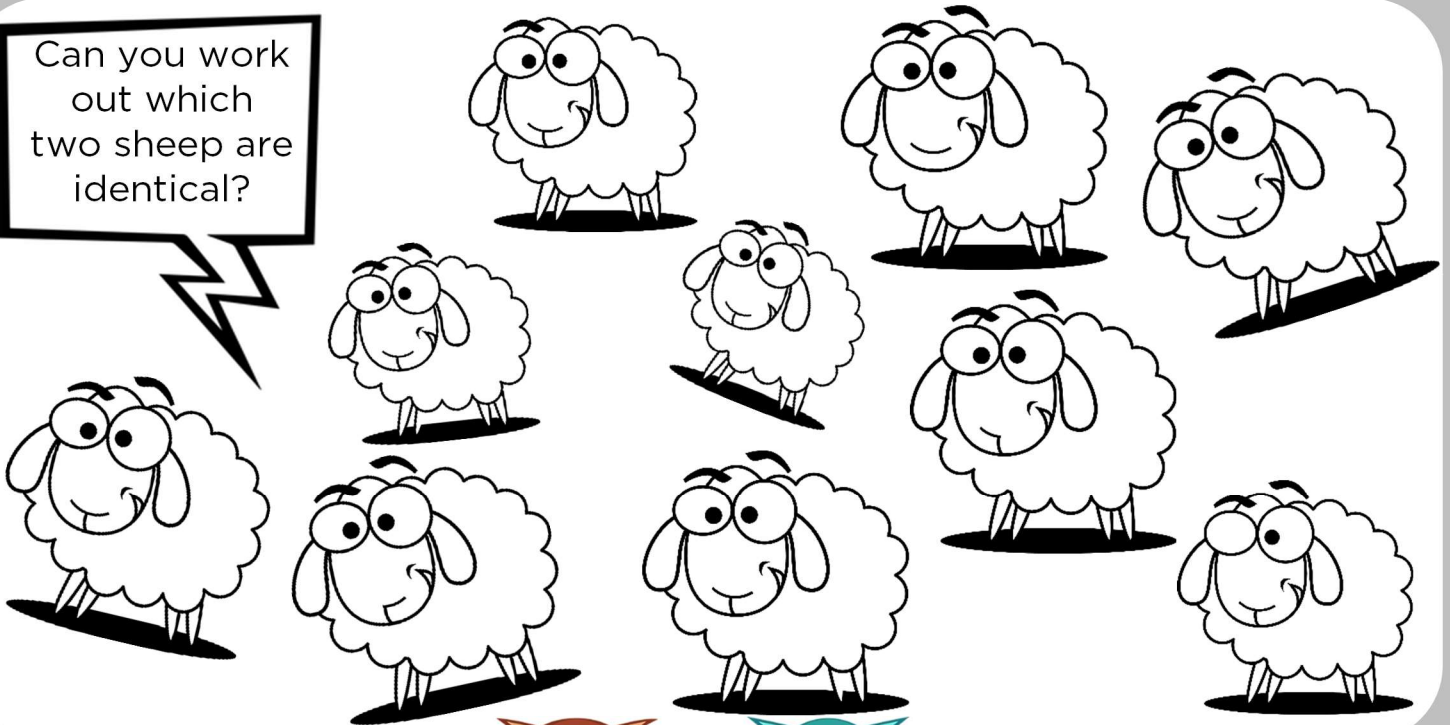
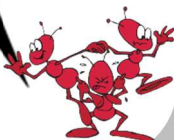


The Bible tells of an occasion where Jesus was talking with a group of people, but the religious leaders were complaining as they thought Jesus was spending time with the wrong people. Jesus tells another parable (a story with a meaning), that uses a shepherd (someone who guards sheep and protects them from danger, keeping them safe). This was to demonstrate just how much He, and God, love and care for everyone.

Can you work out which two sheep are identical?

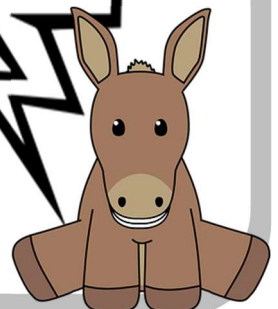



If you had to decide on a collective noun for a group of ants, what would you use?




If you had to decide on a collective noun for a group of owls, what would you use?

If you had to decide on a collective noun for a group of donkeys, what would you use?






Who is important in your life?
Who do you love?



How do you show people that they are important to you?



What do you think Jesus' words and actions in this story tell us about what He is like?

God loves and cares for everyone, and Jesus demonstrated this by spending time and showing kindness with those that society said weren't important.



You can read all about what happened in this story in The Bible in the book of Luke, chapter 15 verses 1 - 7.